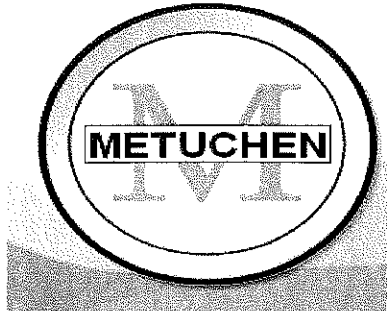


METUCHEN HIGH SCHOOL
February 2012



TO: All Parents/Guardians

From: Bruce J. Peragallo
The Office of the Principal

Freshman Orientation – Tuesday, January 31, 2012

To Parents/Guardians of Eighth Grade Students – There will be a Freshman Orientation program for parents/guardians of students who will be in the ninth grade next year. The program will be on Tuesday, January 31, 2012 at 7:00pm in the high school auditorium. Please note: In case of a school closing on that Tuesday, the program will be rescheduled for Tuesday, February 7.

MHS Booster Club

The next meeting of the MHS booster Club will be on **Wednesday, February 1** at 7:00pm in the MHS library. If you have not yet become a member, please join us for the meeting and find out what we are all about. A membership form is attached for your information.

Bulldog Gear

Show your school spirit with sweatshirts, hats, shirts and more. It is easy...just complete an order form (attached) and drop it off with cash or check made out to the Metuchen Booster Club and your order will be delivered to the MHS Front Office.

Buy-A-Brick Campaign

Please support the MHS Athletic Program and buy an engraved brick paver. The personalized pavers will proudly be displayed by the MHS Stadium. Commemorate Graduation, Academic Achievement, In Loving Memory of, etc. Please see attached flyer for additional information.

Next page >>>>>>>>>

2012 Yearbooks – 2012 Yearbooks – 2012 Yearbooks – 2012 Yearbooks

Yearbooks for the Class of 2012 are on sale now. Please look for a separate mailing from the yearbook company, Jostens. Specific instructions for purchasing the book will be included. A payment plan will be available through Jostens.

Scheduling For School Year 2012-2013

The Guidance Department is busy meeting with students this month to help them choose their courses for next year. The Program of Studies Booklet for 2012-2013 can be found on the guidance website at <http://www.metuchenschools.org/mhs/Guidance/>.

Junior Conferences

Juniors and Junior Parents: If you haven't done so already, please contact the Guidance Office to schedule your College Planning appointment. Parents are encouraged to attend. You can reach the Guidance Office at (732) 321-8750.

Genesis Parent Module

In an effort to reduce costs and become a "green" district, interims and reports can be accessed in our Genesis Parent Module. If you do not already have a parent account in genesis, please send an email to metuchendata@metboe.k12.nj.us with your name, and your child's name and grade. The email you send the request from will be your login. If you have any questions, please call the guidance office at 732-321-8750.

NCAA Eligibility Center: REGISTRATION WEB SITE FOR COLLEGE BOUND STUDENT ATHLETES

Student athletes planning to enroll in college for the Fall of 2012 and participate in Division I or II collegiate athletics should register and enroll at www.eligibilitycenter.org. If you have any questions, or need assistance, please call the guidance office at 732-321-8750.

Naviance Family Connection Reminder

Please be reminded that communication by the Guidance Department is conducted through the use of Naviance Family Connection resources. If you need assistance to register please call 732-321-8750. **Seniors, please review the scholarship postings on Naviance Family Connection weekly (use scholarship tab).**

SAT and ACT Test Dates

The SAT is being offered at Metuchen High School on March 10 and May 5. The regular registration deadlines are February 10th and April 6th. The ACT test date at Metuchen High School is April 14th, registration deadline, March 9th. For more information and to register please visit their websites at www.collegeboard.com and www.actstudent.org. If you have any questions, please call the Guidance office at (732) 321-8750.

Next page >>>>>>>>>>

Spring Musical

The Metuchen High School Footlighters' spring musical is *Sweeney Todd*. "Stephen Sondheim's chilling, suspenseful, heart-pounding masterpiece tells the infamous tale of the unjustly exiled barber who returns to 19th century London seeking revenge." Performances are Thursday March 22, Friday March 23, and Saturday March 24 at 7:30 p.m. in the high school auditorium. Tickets are \$8.00 in advance at the high school (also children and senior citizens), and \$10.00 at the door. *Sweeney Todd* is rated PG for dark subject matter and adult themes.

FREE SAT/ACT COMBO PRACTICE TEST

On Friday, February 17 at 12:30 PM, Kaplan Test Prep will offer a free SAT/ACT Combo Practice Test at the Metuchen Public Library, 480 Middlesex Avenue. The 3.5 hour Combo Practice Test helps students decide which test is right for them. Students will receive scores and feedback via email that compare their performance on each of the analogous test sections of the two exams---for example, SAT math section vs. ACT math section. This is a perfect opportunity to experience both tests, now that most colleges will accept either exam for admissions.

To sign up for the Friday, February 17 Combo test, please write Young Adult Librarian Kathy Liss at KLiss@Lmxac.org or call the Library on 732.632.8526. Space is limited. The free test is open to Metuchen residents only in grades 9, 10 and 11, but will open to interested others on February 6.

PTO / Metuchen Public Schools Fundraiser - Comedy Night

Comedy Night will be held on **Friday, February 24, 2012** at 8:00pm at the Heldrich in New Brunswick. Please see attached flyers for additional information.

Honeywell Alert System

Please don't forget to update the Honeywell Alert System if your contact information changes. You may also adjust your personal profile settings to accommodate your needs. The Honeywell Alert System is used for all communication from the school to home so it is important that the information is up-to-date.

* * * * *

Reminder #1—School will be closed on Friday, February 17 through Tuesday, February 21 in observance of President's Day.

Reminder #2- Next MHS PTO Meeting – Monday, March 5, 2012 – A representative from the Metuchen Police Department will be speaking.

Reminder #3 – It is not too late to sign up for the Stop & Shop A+ School Rewards program! Please see the attached flyer for more information.

MHS Booster Club Order Form

ITEM	PRICE	QTY ORDERED	TOTAL
Rally Towel (closeout)	\$1	_____	\$_____
Seat Cushion (closeout)	\$1	_____	\$_____
Bulldog Paw Print Sticker	\$1	_____	\$_____
Blue Silicone Wrist Bands w/Bulldog Imprint	\$1	_____	\$_____
Circle: Yth or Ad			
Blue Silicone Bulldog Key Chain	\$3	_____	\$_____
Flip Flops (closeout) - please specify desired size in men's or women's	\$5	_____	\$_____
Size? _____			
Drawstring Back Sacks	\$15	_____	\$_____
Black Knit Hat w/embroidered blue M	\$14	_____	\$_____
Grey Knit Hat w/embroidered blue M	\$14	_____	\$_____
Black Baseball Cap (one size w/adjustable back)	\$15	_____	\$_____
ITEM			
		6-8	10-12
		14-16	
Youth Short Sleeve Bulldog Grey T- Shirts	\$10	_____	\$_____
Youth Bulldog Grey Hoody Sweatshirts	\$18	_____	\$_____
ITEM	SM	MED	LG
	XL	XXL	
Blue Dawg Pound SS T-Shirts			
Grey Property of SS Football T-Shirts			
Grey Property of SS Basketball T-Shirts			
Blue Bulldog SS T-Shirts (w/grey & white stripes)			
Blue Alumni Bulldog SS T-Shirts			
Black Long Sleeve Paw Print T-Shirt			
Black Long Sleeve Bulldog T-Shirt			
Blue Mesh Shorts			
Grey Mesh Shorts			
Black w/White Stripe Mesh Shorts			
Plaid Flannel Pajama Pants			
Blue Sweatpants			
Grey Hooded Sweatshirt			
Blue Hooded Sweatshirt			
Blue Full Zip Applique Sweatshirt			
Grand Total			\$_____

Name: _____

Make Checks Payable to: MHS Booster Club

Email: _____

Please Mail Order Form with Payment to:

Phone Number: _____

MHS Booster Club
Metuchen High School
400 Grove Ave.
Metuchen, NJ 08840

Questions? Email metuchenboosterclub@yahoo.com

BOOSTER CLUB
BUY-A-BRICK
CAMPAIGN



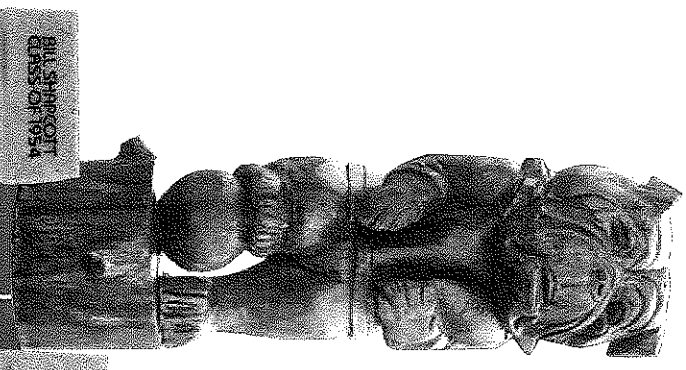
• **SHOW YOUR METUCHEN PRIDE**
 Buy a Brick and leave a legacy

• **BE A PART OF METUCHEN HIGH SCHOOL HISTORY**

• **PLEASE SUPPORT THE MHS ATHLETIC PROGRAM**
 and buy an engraved brick paver. The personalized pavers will proudly be displayed by the MHS Stadium.

COMMEMORATE:

- Graduation
- Academic Achievement
- Individual or Team Sports Record
- Retirement
- Favorite Coach or Faculty Member
- Business Name
- In Loving Memory of



BIL SPINNOT
CLASS OF 1954

THE
CLELAND
FAMILY

MICHAEL SMITH
VARO POINTS
MHS BASKETBALL
2014

IN LOVING
MEMORY OF
DAVID LONES

ABC
CONSTRUCTION

MARY JONES
VALEDICTORIAN
CLASS OF 2007

MARY JONES
VALEDICTORIAN
CLASS OF 2007

MARY JONES
VALEDICTORIAN
CLASS OF 2007

MARY JONES
VALEDICTORIAN
CLASS OF 2007

THE JONES FAMILY
SUSAN 1999
MARCY 2001
MARY 2008

JACK SMITH
100 YEARS
MHS FOOTBALL
2002

SUSAN SMITH
2002 GYM
SCHOLAR ATHLETE

GARY CROSS
COUNTRY 2010
GMC
CHAMPIONS

METUCHEN HIGH SCHOOL
BOOSTER CLUB
BUY-A-BRICK
CAMPAIGN

Name: _____

Address: _____

Phone: _____

E-Mail: _____

Total Enclosed: _____

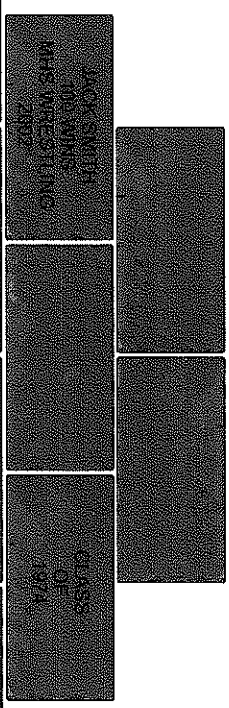
Please circle desired brick size and enter inscription in appropriate boxes on the reverse side of this page.

4" x 8"	6" x 9"	12" x 12"
\$75	\$125	\$200

Please make checks payable to **MHS Booster Club** and send with completed form to:

MHS Booster Club
 Metuchen High School
 400 Grove Avenue
 Metuchen, NJ 08840

For more information, please e-mail metuchenboosterclub@yahoo.com



JACK SMITH
100 YEARS
MHS FOOTBALL
2002

SUSAN SMITH
2002 GYM
SCHOLAR ATHLETE

CLASS
OF
1974

THE JONES FAMILY
SUSAN 1999
MARCY 2001
MARY 2008

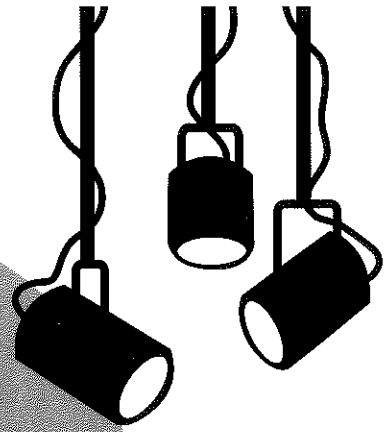
JACK SMITH
100 YEARS
MHS FOOTBALL
2002

SUSAN SMITH
2002 GYM
SCHOLAR ATHLETE

GARY CROSS
COUNTRY 2010
GMC
CHAMPIONS

Metuchen PT Council
Presents

Comedy Night



Tickets Only
\$45 per person

**Friday,
February 24, 2012
8:00pm**

The Heldrich Hotel
New Brunswick

**Enjoy
Headliner
Comedy Acts and
A Silent Auction**

Cocktail Hour with
Cash Bar, Appetizers,
Desserts and Coffee

For information contact:
Teresa Zeng or Kelly Jaques at
ptocomedynight@yahoo.com

Adult-only event. (Age 21 and over.)
Casual Dress

All sponsors
will be prominently displayed
at the event highlighting your
level of support. Sponsors will
also be published in the
Ad Journal which will be
delivered to all participants.

Scroll to next page
for additional details on how to
become a sponsor.

**Buy a Raffle Ticket
\$10.00 each**

Take a Chance on Our Schools!
Tickets will be available at all
school events.

Scroll to next page for
additional details on how to
get your raffle tickets.

All proceeds to benefit Metuchen Schools

Make A Reservation!

Please reserve ___ tickets at \$45/person for me!
Must be 21 or older to attend.

Make check payable to **Metuchen PT Council** and return
the form to your child's homeroom teacher or mail to:

Metuchen PT Council
Attn: Comedy Night
Metuchen Board of Education
16 Simpson Place
Metuchen, NJ 08840

Confirmation will be e-mailed once payment is received.

Return your reservation form and payment before January
13, 2012 and you will be entered in a drawing for a **FREE**
overnight room at The Heldrich on the night of the event!
There will be 3 lucky winners! Drawing will be held
January 23, 2012 at the Edgar School PTO Meeting.

Name _____

Address _____

Phone _____

Email _____

*Interested in staying overnight? Rooms are available at a
special discounted rate of \$99 including a breakfast for
two. Please go to www.theheldrich.com and enter the
attendee code **148977** to make reservations.*

**Don't forget to bring your checkbook to be a part of the
Comedy Night Silent Auction!**

Thank You for Supporting Our Schools!

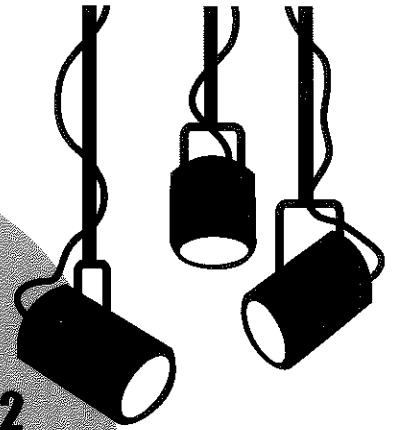
Metuchen PT Council
Presents

Comedy Night

Tickets Only
\$45 per person

**Friday,
February 24, 2012
8:00pm**

The Heldrich Hotel
New Brunswick



1 Be a Sponsor

Table Sponsor

Includes Ad Journal

- Headliner - \$500 Dedicated Page
- Opening Act - \$250 Half Page
- Emcee - \$125 Business Card Size

All table sponsors will be prominently displayed at the event highlighting your level of support. Sponsors will also be published in the Ad Journal which will be delivered to all participants. Sponsors will be contacted to make arrangements for your advertisement!

To take advantage of the Comedy Night ad journal please contact Teresa Zeng or Kelly Jaques at ptocomedynight@yahoo.com

2 Make a Donation

- Belly Laugh - \$75
- Side Splitter - \$50
- Other Amount - _____
- Big Ticket Silent Auction Prizes such as Tickets, iPod, TV, Vacation Home, etc.

To arrange for pick up of a donation before Jan. 31, 2012, please email: ptocomedynight@yahoo.com

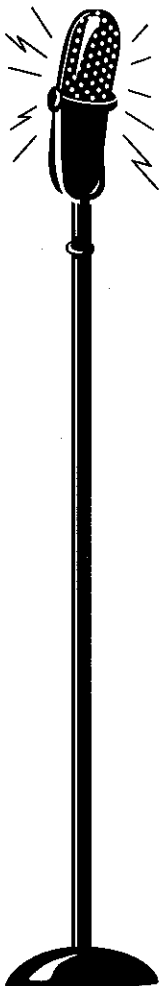
All donations will be listed in our event program and are tax deductible.

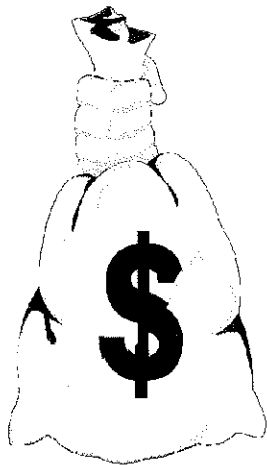
3 Buy a Raffle Ticket - \$10.00 each

Take a Chance on Our Schools! Tickets will be available at all school events, PTO meetings or by asking any PTO officer. The drawing will be held at the Heldrich Hotel on Feb. 24th. Winners need not be present to win. If you cannot attend Comedy Night this is a great way to help support our schools.

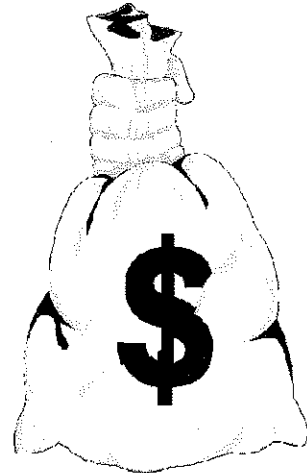
1st - \$3750 2nd - \$2250 3rd - \$1500

Final prize amounts will be determined by the total number of tickets sold.
For Tickets e-mail: carolyntaylor@optonline.net or valovcin@optonline.net





YOU COULD
WIN
\$\$\$



Help your school and win some money!!!

PT Council is selling \$10 raffle tickets

If all tickets are sold, prizes will be:

1st prize (25%) \$3,750

2nd prize (15%) \$2,250

3rd prize (10%) \$1,500

Drawing will be held at Comedy Night February 24, 2012

****Winners do not need to be present****

???’s Dawn 549-7887 valovcin@optonline.net or Carolyn 754-1905 carolyntaylor@optonline.net

Please return form and payment to your child’s school or mail to:

Metuchen PT Council Attn: Raffle Tickets

Metuchen Board of Education, 16 Simpson Place, Metuchen NJ 08840

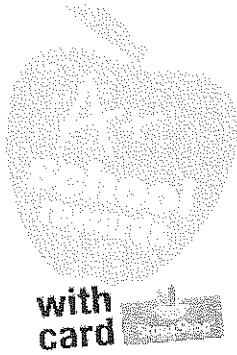
Name _____

Address _____

Phone number _____

School _____ Homeroom _____

of Tickets _____ at \$10 each **Make checks payable to Metuchen PT Council**



Dear Parents:

Welcome to the start of a new school year and another year of A+ School Rewards. Starting October 7, 2011 through March 29, 2012, **METUCHEN HIGH SCHOOL** will have the opportunity to earn cash through Stop & Shop A+ School Rewards Program.

All you have to do is:

Log on to www.stopandshop.com/aplus to register online

OR

Dial 1-877-275-2758 to register your card over the phone

After you register your card, each shopping trip at Stop & Shop using your Stop & Shop Card earns CASH for our school! Each month, the amount of CASH awarded will be updated on the Stop & Shop website. You can track the amount of points you earn for our school by checking your grocery receipt and online when you create an account at www.stopandshop.com. Our school will receive a check at the end of the program. The money can be used for any of our school's educational needs.

Remember, even if you registered your card last year, you must re-register this year for our school to receive credit. Attending to this simple process makes a HUGE difference to our school. We need your support.

Please be sure to register your card to benefit **METUCHEN HIGH SCHOOL** using ID # **14444**.

Also, don't forget to encourage your friends and relatives to do the same.

It could mean the world to our children.