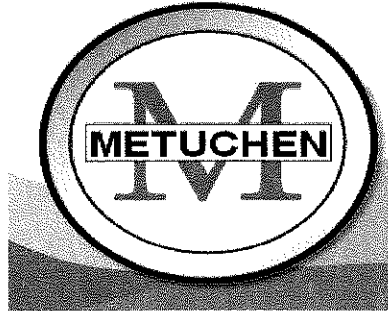


METUCHEN HIGH SCHOOL
December 2011



TO: All Parents/Guardians

From: Bruce J. Peragallo
The Office of the Principal

Genesis Parent Module

In an effort to reduce costs and become a "green" district, beginning with the 2011-2012 school year we will no longer be mailing interims or report cards. These can be accessed in our Genesis Parent Module. If you do not already have a parent account in genesis, please send an email to metuchendata@metboe.k12.nj.us with your name, and your child's name and grade. The email you send the request from will be your login. If you have any questions, please call the guidance office at 732-321-8750.

College Planning Night – December 8, 2011

On Thursday, December 8th The Guidance Department is pleased to host our annual College Planning Night for college-bound students and their families. Juniors are encouraged to attend, but all students and families are welcome.

Admission representatives from the University of Delaware, Ramapo College of New Jersey, and George Washington University will join the high school counselors to discuss how colleges select applicants, finding the school that is the best "fit", and the nuances of the application process, among other topics. Our panelists will also field questions. The presentation will begin at 7 pm in the high school auditorium.

ATTENTION SENIOR STUDENTS:

Any senior students that need mid-year/first semester grades sent to any college that they applied to, must submit the request on the attached form. Please submit to the guidance department by **January 30, 2012.**

Next Page>>>>>>>>

ACT – Saturday, December 10, 2011 and April 14, 2012

Metuchen High School has been designated as an ACT testing site. The ACT assesses high school students' general education development, as well as their ability to complete college-level work. The test is comprised of four sections: English, Mathematics, Reading and Science, as well as an optional Writing section that should be taken. The ACT is accepted by all colleges and universities and is used in addition to, or in lieu of the SAT exam for college admission. MHS will be offering the test on **December 10th, 2011** (registration deadline: **November 4th**), and **April 14th, 2012** (registration deadline: **March 9, 2012**). Registration for the exam can be found at www.actstudent.org. Please contact your child's guidance counselor with any additional questions.

Winter Holiday Concert – Thursday, December 22

The Music Department invites all parents/guardians, students, and friends of MHS to enjoy an evening of seasonal music at the annual Winter Holiday Concert. The program will start at 7:00 p.m. in the auditorium. Instrumental and choral performances will be presented by the MHS orchestra, stage band, concert choir, and choral club.

Bulldog Gear

Just in time for the Holidays - Metuchen Bulldog gear makes a great holiday gift. Show your school spirit with sweatshirts, hats, shirts and more. It's easy, complete order form, drop off with cash or check made out to Metuchen Booster Club and we'll deliver your order to the school office. Please see attached flyer for additional information.

Booster Club Buy-A-Brick Campaign

Please support the MHS Athletic Program and buy an engraved brick paver. The personalized pavers will proudly be displayed by the MHS Stadium. Commemorate Graduation, Academic Achievement, In Loving Memory of, etc. Please see attached flyer for additional information.

2012 Yearbooks – 2012 Yearbooks – 2012 Yearbooks – 2012 Yearbooks

Yearbooks for the Class of 2012 will be on sale soon. Please look for a separate mailing from the yearbook company, Jostens. Specific instructions for purchasing the book will be included. A payment plan will be available through Jostens.

Metuchen PT Council Presents Comedy Night – Friday, February 24, 2012

Comedy Night will be held on Friday, February 24, 2012 at 8:00pm. Please see flyer attached for additional information and to make reservations.

Next Page>>>>>>>

Senior Athletes – NCAA Initial-Eligibility Clearinghouse

NCAA ELIGIBILITY CENTER: REGISTRATION WEBSITE FOR COLLEGE BOUND STUDENT ATHLETES

The Eligibility Center has designed a new Web site with you, the student-athlete, in mind. This is where you will find the tools and information you need to begin your college experience as a student-athlete. To register with the Eligibility Center, go online to www.eligibilitycenter.org. To create an account, either click on the “New Account” button at the top right of the screen or the cell phone on the left side of the screen. If you have any questions, or need assistance, please call your Guidance Counselor at 732-321-8750.

For more information please download the NCAA Guide For The College-Bound Student Athlete at <http://www.ncaapublications.com/productdownloads/CB12.pdf>.

2012 Governor’s School Applications

During the month of December, Kathleen Henn (Supervisor of Science and Gifted Education) will meet with juniors who are eligible to apply to the Governor’s School Programs for the summer of 2012. This year, there are two Governor’s Schools in New Jersey, each of which runs for between three and four weeks during the summer. They are: The Governor’s School in the Sciences at Drew University (July 15-August 12, 2012) and the Governor’s School of Engineering and Technology at Rutgers University (July 1-27, 2012). These programs are offered at no cost to selected students. Metuchen High School may nominate one student to apply for each school. The final selection is highly competitive, with students generally meeting the following criteria: 1) mostly A’s in math and science courses, 2) top 5% of their class, 3) above 90th percentile on standardized testing and 4) a strong commitment to the Governor’s School program demonstrated in the application, including essays and recommendations. If you have a son or daughter in the current junior class who qualifies and you would like more information about these programs, please call Kathleen Henn at (732) 321 8744 x 3410. Information is also available at www.nj.gov/govschool.

Student Attendance – A Reminder

Please review the below-listed student attendance procedures and information:

- Call the Main Office (732-321-8743), the Attendance Office (x8500), or the Nurse’s Office (x8747) on the morning of the absence. If a phone call is not received, your child’s absence will be considered “unexcused” and he/she will be considered truant. An excused absence is defined as illness/injury, religious holidays as designated by the state, death in the family, extreme emergencies, quarantine, or authorization by school officials (court appearances, driving test, college visits, etc.). Please note that documentation may be required.
- Call any of the above numbers when your child is tardy to school. Running late and/or oversleeping are not considered excused tardies.

Next Page>>>>>>>>

- Call any of the above numbers or submit a written note one day in advance to request an early dismissal. The morning of the early dismissal the office staff will give your child a written pass that will allow them to leave class.

It is important to note that prolonged or repeated absences and/or tardies, excused or unexcused, from school or from class, deprive the student of experiences essential to learning. Additionally, excessive absences and/or tardies may result in loss of credit in a course or courses. It is also important to note that your child's attendance record will appear on their transcript which is sent when applying to colleges.

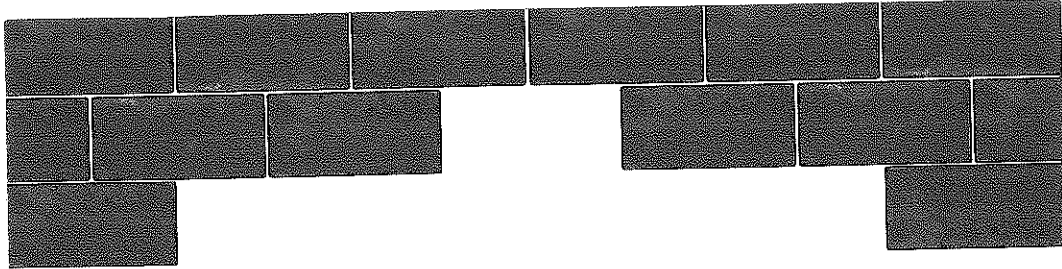
If there are ongoing health problems or personal matters that are causing frequent absences or tardies, please contact Vice Principal Susan La Fauci, your child's guidance counselor, or the nurse to discuss the matter.

Reminder #1- Student Council Snowball Dance will be held on Saturday, December 10 from 7:30 – 10:30pm. If students are bringing guests who do not attend Metuchen High School, they must see Ms. La Fauci, Vice Principal. Tickets are \$10 for single; \$20 for couples. Tickets can be purchased in advance or at the door.

Reminder #2- Mid-marking period for the second marking cycle is on Monday, December 12.

Reminder #3- There will be an early dismissal on Friday, December 23 at 1:00pm for Winter Recess. Schools will be closed from Monday, December 26 through Friday, December 30, 2011. Schools will also be closed on Monday, January 2 in observance of New Years Day.

Reminder #4- The next PTO Meeting is scheduled for Monday evening, January 9. All parents/guardians are invited to attend. The meeting will take place in the MHS Library and begin at 7:30 p.m.



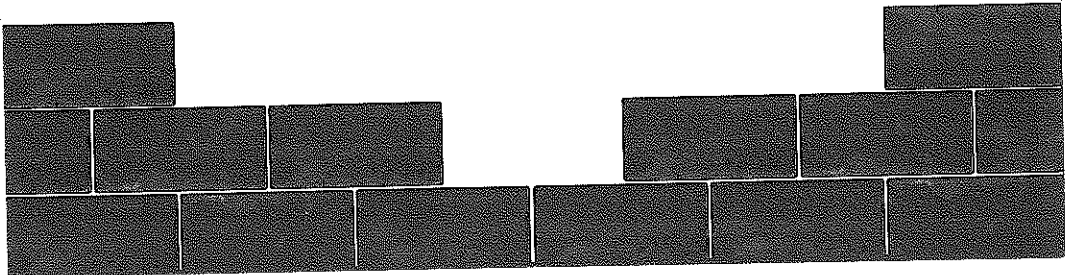
METUCHEN HIGH SCHOOL

BOOSTER CLUB



BUY-A-BRICK

CAMPAIGN



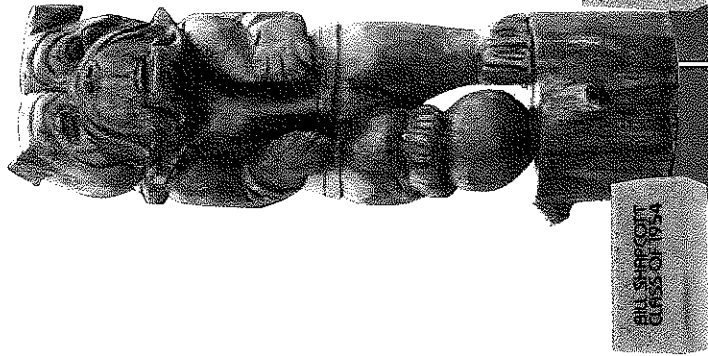
BOOSTER CLUB BUY-A-BRICK CAMPAIGN



- **SHOW YOUR METUCHEN PRIDE**
Buy a Brick and leave a legacy
- **BE A PART OF METUCHEN HIGH SCHOOL HISTORY**
- **Please SUPPORT THE MHS ATHLETIC PROGRAM**
and buy an engraved brick paver. The personalized pavers will proudly be displayed by the MHS Stadium.

COMMEMORATE:

- Graduation
- Academic Achievement
- Individual or Team Sports Record
- Retirement
- Favorite Coach or Faculty Member
- Business Name
- In Loving Memory of



BILL SHRESCOTT
CLASS OF 1954

THE
CELAND
FAMILY

MICHAEL SMITH
1000 POINTS
MHS BASKETBALL
2011

IN LOVING
MEMORY OF
DAVID JONES

ABC
CONSTRUCTION

MARY JONES
VALEDICTORIAN
CLASS OF 2007

METUCHEN HIGH SCHOOL BOOSTER CLUB BUY-A-BRICK CAMPAIGN

Name: _____

Address: _____

Phone: _____

E-Mail: _____

Total Enclosed: _____

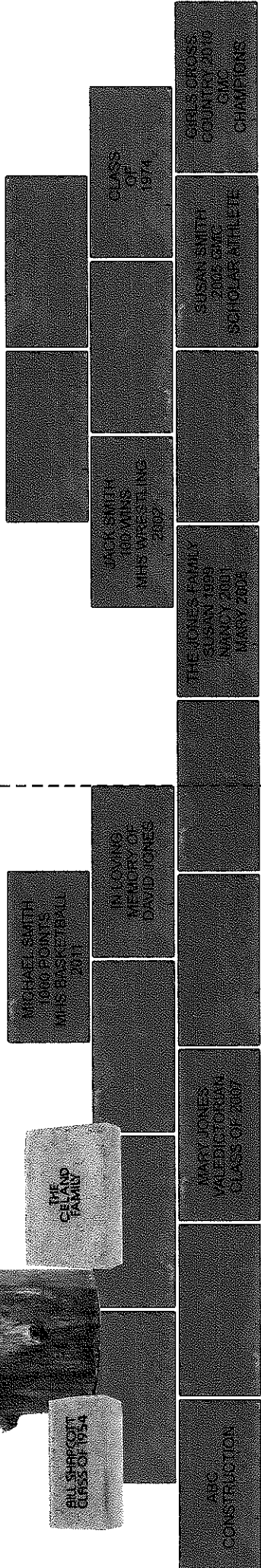
Please circle desired brick size and enter inscription in appropriate boxes on the reverse side of this page.

4" x 8" 6" x 9" 12" x 12"
\$75 \$125 \$200

Please make checks payable to **MHS Booster Club** and send with completed form to:

MHS Booster Club
Metuchen High School
400 Grove Avenue
Metuchen, NJ 08840

For more information, please e-mail metuchenboosterclub@yahoo.com



JACK SMITH
BROWNS
MHS WRESTLING
2002

CLASS
OF
1974

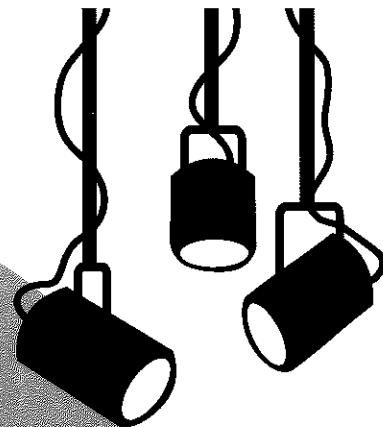
THE JONES FAMILY
SUSAN 1999
NANCY 2001
MARY 2002

SUSAN SMITH
2002 GAC
SCHOLARATHLETE

GIRLS CROSS-
COUNTRY 2010
CWC
CHAMPIONS

Metuchen PT Council
Presents

Comedy Night



Tickets Only
\$45 per person

**Friday,
February 24, 2012
8:00pm**

The Heldrich Hotel
New Brunswick

**Enjoy
Headliner
Comedy Acts and
A Silent Auction**

Cocktail Hour with
Cash Bar, Appetizers,
Desserts and Coffee

For information contact:
Teresa Zeng or Kelly Jaques at
ptocomedynight@yahoo.com

Adult only event. (Age 21 and over.)
Casual Dress

All sponsors
will be prominently displayed
at the event highlighting your
level of support. Sponsors will
also be published in the
Ad Journal which will be
delivered to all participants.

Scroll to next page
for additional details on how to
become a sponsor.

**Buy a Raffle Ticket
\$10.00 each**

Take a Chance on Our Schools!
Tickets will be available at all
school events.

Scroll to next page for
additional details on how to
get your raffle tickets.

All proceeds to benefit Metuchen Schools

Make A Reservation!

Please reserve ___ tickets at \$45/person for me!
Must be 21 or older to attend.

Make check payable to **Metuchen PT Council** and return
the form to your child's homeroom teacher or mail to:

Metuchen PT Council
Attn: Comedy Night
Metuchen Board of Education
16 Simpson Place
Metuchen, NJ 08840

Confirmation will be e-mailed once payment is received.

Return your reservation form and payment before January
13, 2012 and you will be entered in a drawing for a **FREE**
overnight room at The Heldrich on the night of the event!
There will be 3 lucky winners! Drawing will be held
January 23, 2012 at the Edgar School PTO Meeting.

Name _____

Address _____

Phone _____

Email _____

*Interested in staying overnight? Rooms are available at a
special discounted rate of \$99 including a breakfast for
two. Please go to www.theheldrich.com and enter the
attendee code **148977** to make reservations.*

**Don't forget to bring your checkbook to be a part of the
Comedy Night Silent Auction!**

Thank You for Supporting Our Schools!

MID-YEAR / FIRST SEMESTER REPORT CARD REQUEST

Student Name: _____ DATE: _____

List **ONLY** the schools requesting mid-year/first semester grades. No grades will be sent without completing this form. If you have a mid-year transcript request form to send with your transcript, please indicate (by the check box) which school and attach the form.

NAME OF COLLEGE / UNIVERSITY

SEND
FORM

DO NOT WRITE IN THIS BOX – FOR GUIDANCE DEPT USE ONLY

Transcripts sent: _____